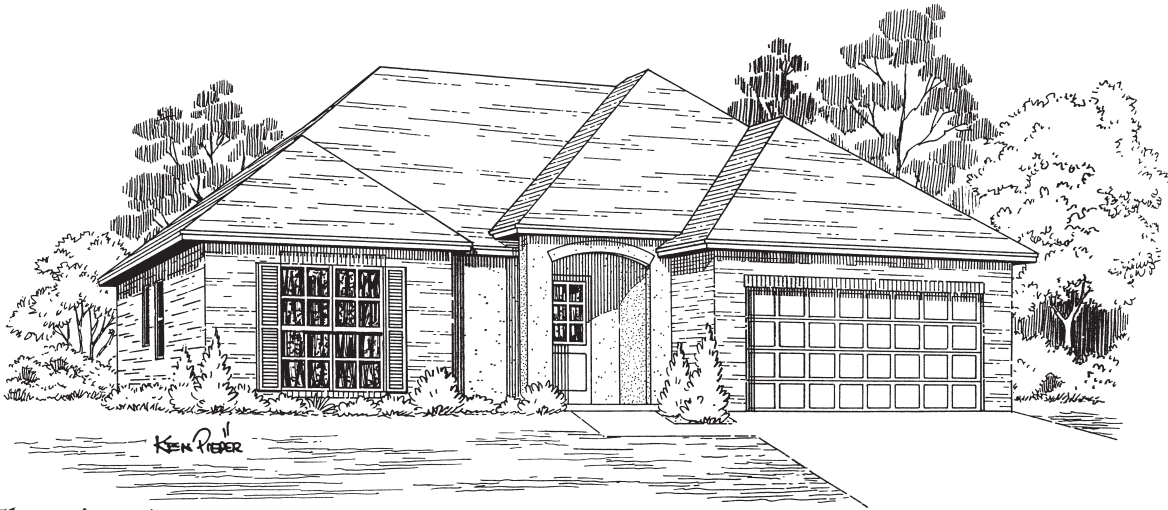
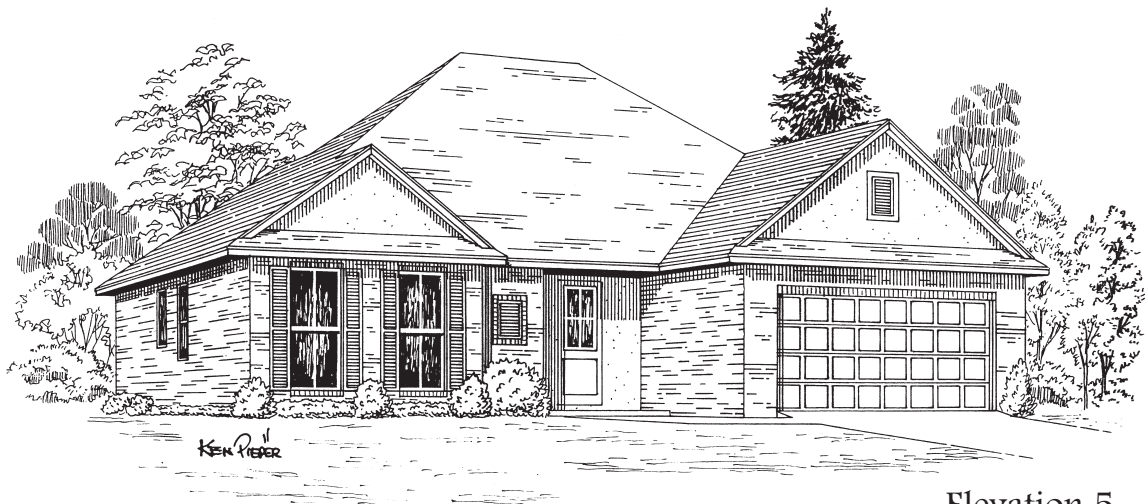


Audubon



Elevation 4



Elevation 5

- 9' ceilings and open floorplan make this perfect for entertaining.
- Elegant Kitchen with walk-in pantry and Breakfast Bar overlooking Great Room.
- Indoor Laundry Room leads from the Garage into the Kitchen.
- Walk-in closets in secondary bedrooms.
- Double vanities, separate shower and garden tub in Master Bath.
- His and her walk-in closets in Master Suite.
- 10 year New Home Buyer's Warranty for added peace of mind.

